

IGUAZU II™ SERIES

Advanced Technology Color Sorting Equipment
Iguazu II • Penta II • Iguazu II IR



Sorters for virtually any application.

Including: Coffee • Seeds • Cereals • Pulses • Nuts • Plastics • Many More

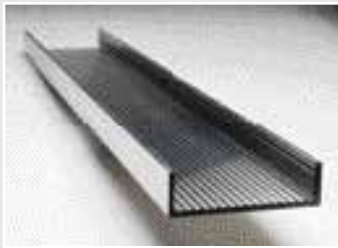
Modular feeding chutes with self-contained electronics provide value and longevity.

Delta's Iguazu II series are the only optical sorters that can be expanded with additional **feeding chutes** as your needs increase. You can start with two chutes and expand to up to seven chutes on the same sorter, reducing capital expense and reducing the time for you to add additional capacity. In addition, since each chute can be operated as an independent unit, you can resort the rejects on the same machine.



Exclusive feeding concept reduces product changeover time.

Unlike other sorters that require changing the feed trays to accommodate different size products, Delta's engineers have designed a **universal feed tray** that can accept products of varying sizes. There is no maintenance time involved in changing trays when you switch from sorting one product to another. In many operations, this eliminates the need for additional sorters.



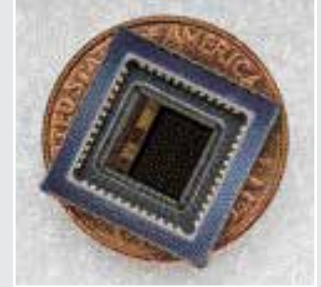
Ejector valves machined for longer life.

The **ejectors**, which operate at 1,000 cycles/sec., are machined to higher tolerances and built with higher quality materials than typical ejector valves. In addition, Delta's engineers have created a design that eliminates much of the ejector's internal wear and tear from repetitive action. All of this results in significantly longer ejector life, more precise sorting and less maintenance downtime.



Iguazu II

- Up to seven chutes, 16 ejectors/chute.
- **High-resolution monochromatic sensors** allow the recognition of very small defects.
- May be converted to IR.



Penta II

- Up to seven chutes, 16 ejectors/chute.
- **Tri-color camera** employs CMOS (complementary metal oxide semi-conductor) technology, which uses less power and smaller equipment than conventional RGB cameras.
- Only gravity feed, high production trichromatic sorter in the industry.



Iguazu II IR

- Up to six chutes, 16 ejectors/chute.
- Low energy infrared light source for foreign material recognition.
- **High-resolution IR sensor** allows the recognition of very small defects.



Iguazu II IR sorters use tubular incandescent lighting in a way that has been patented by Delta Technology.

Tubular incandescents have longer life, use significantly less power, are much cooler and are much easier to replace.





Speed and accuracy that only innovative technology can produce.

From lighting systems to ejector design, from electronics to metallurgy, the Iguazu II series exemplifies the highest standards and newest technologies in optical sorters. All Delta sorters are self-adjusting, fully automatic and easy to operate. Plus, Iguazu II sorters have been

designed to pack more power into a smaller space. Delta Technology's engineers have created workhorse sorters that will benefit virtually any sorting application. Rugged and reliable, from a value standpoint, no other sorters compare to Iguazu II.

ABOUT US

Delta Technology is a world leader in the field of optical sorters. Through diligent and dedicated effort, we have continued to create technological innovations and a leadership position. We are a manufacturer, not an assembler. Not only are the designs of our own inventions, but all metal works and special components are made under our own roof, to the strictest industrial standards. This is the real guarantee of a quality product that will produce accurate results on a sustaining basis, day after day, year after year. Contact Delta Technology for your specific application needs.

TECHNICAL DATA

Electrical	110 VAC or 220 VAC, 60 or 50 Hz/single phase power 1.7 KVA input power, approx. 1.35 KW
Air	10 CFM @ 100 PSI (5 Lts/Sec @ 7 Bar) per Tray 60 CFM @ 100 PSI (30 Lts/Sec @ 7 Bar) 7 Trays
Operating Temperature	40 - 90° F (5 - 33° C)
Weight	1400 Lbs (635 Kg)
Dimension	Height 68 Inches (1715 mm) Width 58 Inches (1470 mm) Depth 45 Inches (1130 mm)

Iguazu II and Penta II available in 7,6,5,4,3,2 trays
Iguazu II IR available in 6,5,4,3,2 trays

